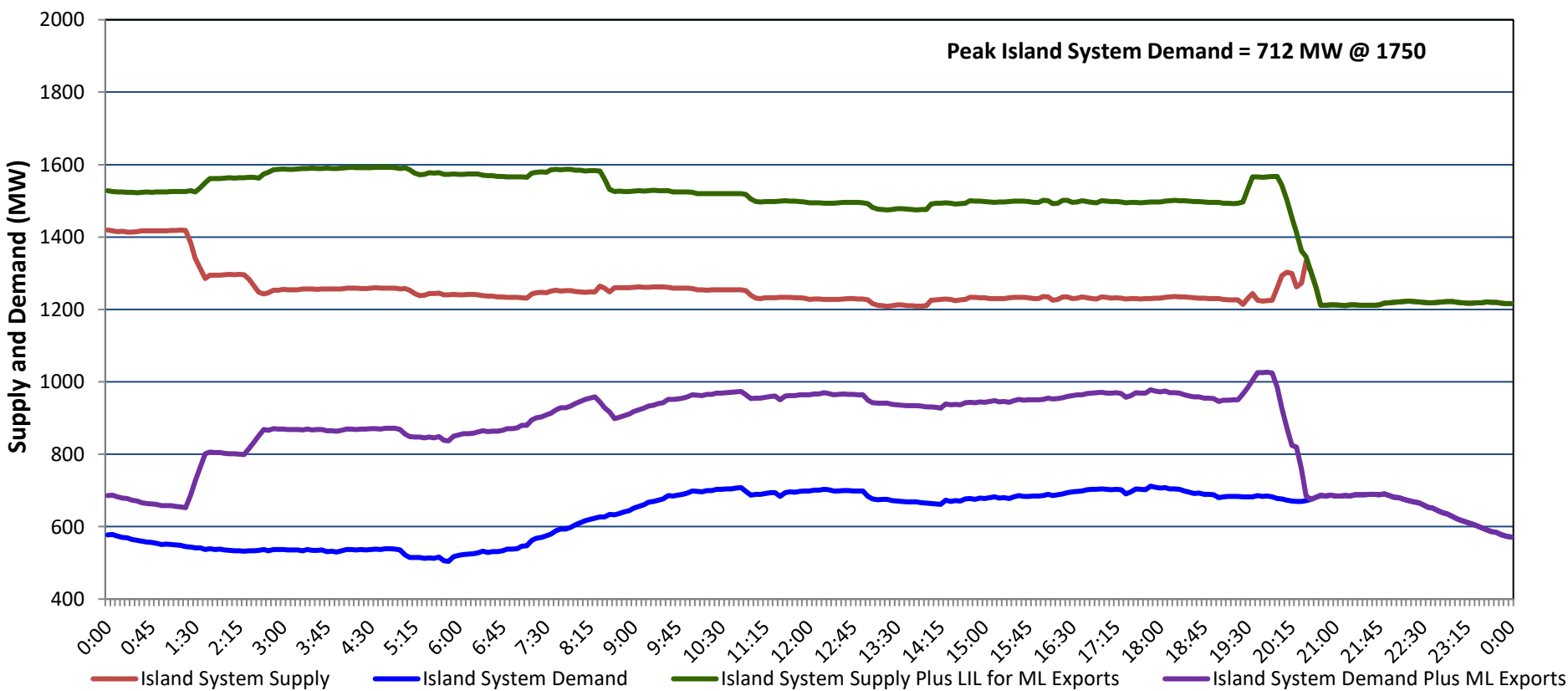


Newfoundland Labrador Hydro (NLH)
Supply and Demand Status Report Filed Tuesday, July 15, 2025

Section 1
Island Interconnected System - Supply, Demand & Exports
Actual 24 Hour System Performance For Sunday, July 13, 2025



Island Supply Notes For July 13, 2025

- A As of 0800 hours, March 30, 2025, Holyrood Unit 3 unavailable due to planned outage 130 MW (150 MW).
B As of 0823 hours, March 31, 2025, Bay d'Espoir Unit 1 unavailable due to planned outage (76.5 MW).
C As of 0823 hours, March 31, 2025, Bay d'Espoir Unit 2 unavailable due to planned outage (76.5 MW).
D As of 0800 hours, May 04, 2025, Holyrood Unit 1 unavailable due to planned outage (170 MW).
E As of 0851 hours, May 05, 2025, Hardwoods Gas Turbine unavailable due to planned outage (50 MW).
F As of 0800 hours, June 08, 2025, Holyrood Unit 2 unavailable due to planned outage 115 MW (170 MW).
G As of 1336 hours, June 15, 2025, Granite Canal Unit unavailable due to planned outage (40 MW).
H As of 1400 hours, June 29, 2025, St. Anthony Diesel Plant available at 7.7 MW due to forced derating (9.7 MW).
I At 2040 hours, July 13, 2025, Labrador Island Link unavailable due to forced outage (700 MW).

Section 2
Island Interconnected System - Supply, Demand & Outlook

Mon, Jul 14, 2025	Island System Outlook ²	Seven-Day Forecast	Island System Daily Peak Demand (MW)	
			Forecast ⁸	Adjusted ⁶
Island System Supply: ⁴ NLH Island Generation: ^{3,7} NLH Island Power Purchases: ⁵ NP and CBPP Owned Generation: LIL/ML Net Imports to Island: ⁹	1,255 MW 960 MW 95 MW 200 MW - MW	Monday, July 14, 2025	795	745
		Tuesday, July 15, 2025	740	690
		Wednesday, July 16, 2025	780	730
		Thursday, July 17, 2025	780	730
		Friday, July 18, 2025	760	710
		Saturday, July 19, 2025	725	675
		Sunday, July 20, 2025	720	670
7-Day Island Peak Demand Forecast:	795 MW			

Island Supply Notes For July 14, 2025

- Notes: 1. Generation outages for running and corrective maintenance are included. These are not unusual for power system operations. They generally do not impact customer supply. Hydro schedules outages to system equipment whenever possible to coincide with periods when customer demands are low and sufficient supply reserves are available. However, from time to time equipment outages are necessary and reserves may be impacted.
2. As of 0800 Hours.
3. Gross continuous unit output.
4. Gross output from all Island sources (including Note 3).
5. NLH Island Power Purchases include: ML Imports, Exploits Generation, Rattle Brook, Star Lake, Wind Generation and capacity assistance (when applicable).
6. Adjusted for interruptible load and the impact of voltage reduction when applicable.
7. Due to limitations inherent in the design of combustion turbines, the output of combustion turbines may be reduced in the event that ambient temperatures exceed the threshold required for full rated output. This threshold is dependent on the design of each turbine.
8. Does not include ML Exports.
9. LIL Import sunk in the Island System. Actual LIL flows will be restricted by various system conditions including, but not limited to, Island Load, ML Exports and Avalon Unit status.

Section 3
Island Peak Demand and Exports Information
Previous Day Actual Peak and Current Day Forecast Peak

Sun, Jul 13, 2025	Island Peak Demand ¹⁰	17:50	712 MW
	Exports at Peak		266 MW
	LIL Net Imports to Island		849 MWh
Mon, Jul 14, 2025	Forecast Island Peak Demand		795 MW

- Notes: 10. Island Demand is supplied by NLH generation and purchases, LIL Imports plus generation owned and operated by Newfoundland Power and Corner Brook Pulp & Paper (Deer Lake Power, DLP).